

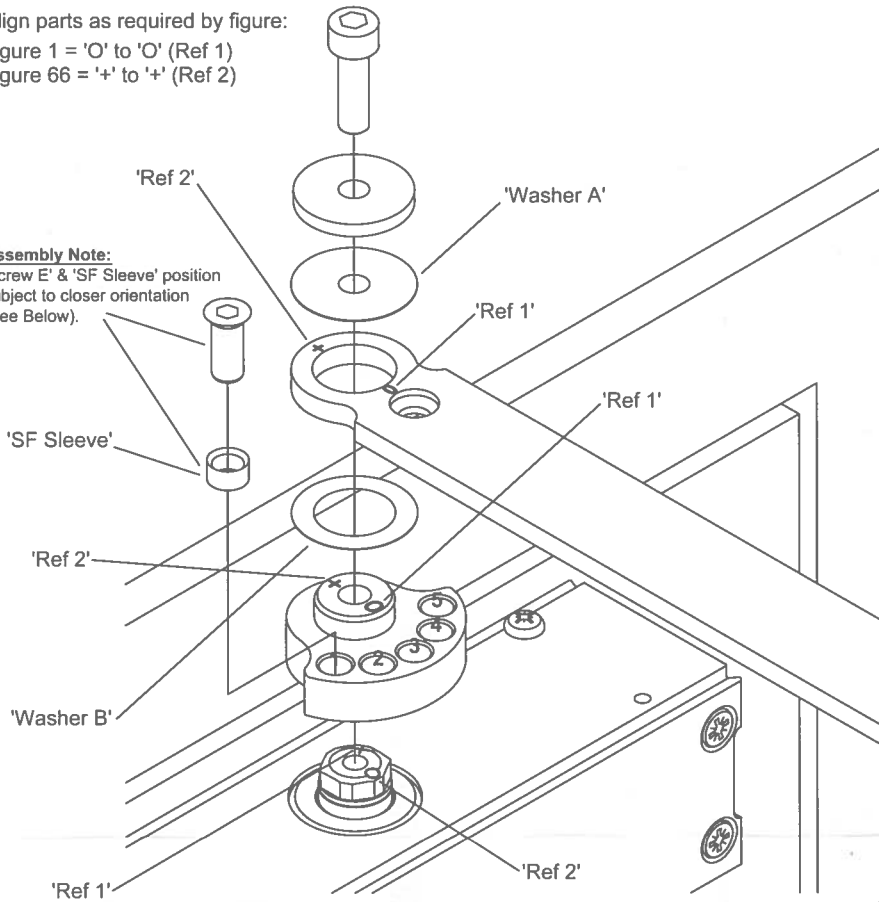
SWING FREE.

INSTALLATION INSTRUCTIONS.

ASSEMBLY VIEW

Align parts as required by figure:
 Figure 1 = 'O' to 'O' (Ref 1)
 Figure 66 = '+' to '+' (Ref 2)

Assembly Note:
 'Screw E' & 'SF Sleeve' position
 subject to closer orientation
 (See Below).



OPERATION

Once the unit is fitted and the 24v DC (at 100mA ±10%) power is supplied, open the door to at least 90 degrees to activate the swing free action.

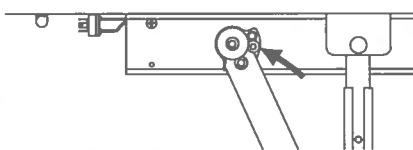
The door should now operate in swing free mode until either the fire alarm is activated, power is lost or the test switch is operated. When any of the above occurs the door will automatically close by the action of the door closer.

Follow the steps detailed in conjunction with the main fitting instructions leaflet to fit the unit in swing free.

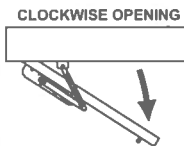
FIGURE 1 SWING FREE CONFIGURATIONS (PULL SIDE)

CLOCKWISE OPENING

ASSEMBLY VIEW



For clockwise opening figure 1 swing free closer install the screw and sleeve (Detail A) into 'Hole 4' as shown in the assembly view.

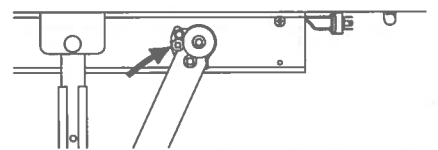


Detail A:
 'Screw E' & 'SF Sleeve' Assembly

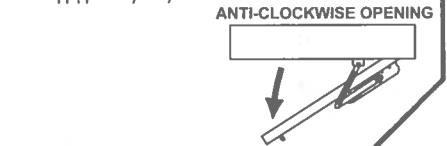


ANTI-CLOCKWISE OPENING

ASSEMBLY VIEW



For anti-clockwise opening figure 1 swing free closer install the screw and sleeve (Detail A) into 'Hole 2' as shown in the assembly view.



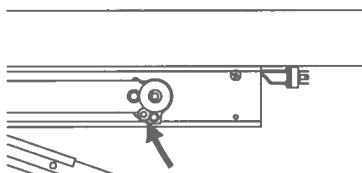
Detail A:
 'Screw E' & 'SF Sleeve' Assembly



FIGURE 66 SWING FREE CONFIGURATIONS (PUSH SIDE)

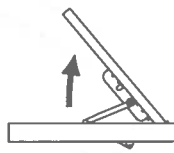
CLOCKWISE OPENING

ASSEMBLY VIEW



For clockwise opening figure 66 parallel arm swing free closer's fitted to doors restricted to less than 90 degree opening install the screw and sleeve (Detail A) into 'Hole 4' or 'Hole 3' as shown in the assembly view.

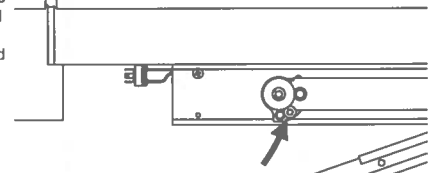
Detail A:
 'Screw E' & 'SF Sleeve' Assembly



CLOCKWISE OPENING

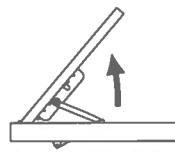
ANTI-CLOCKWISE OPENING

ASSEMBLY VIEW



For anti-clockwise opening figure 66 parallel arm swing free closer's fitted to doors restricted to less than 90 degree opening install the screw and sleeve (Detail A) into 'Hole 2' or 'Hole 3' as shown in the assembly view.

Detail A:
 'Screw E' & 'SF Sleeve' Assembly



ANTI-CLOCKWISE OPENING